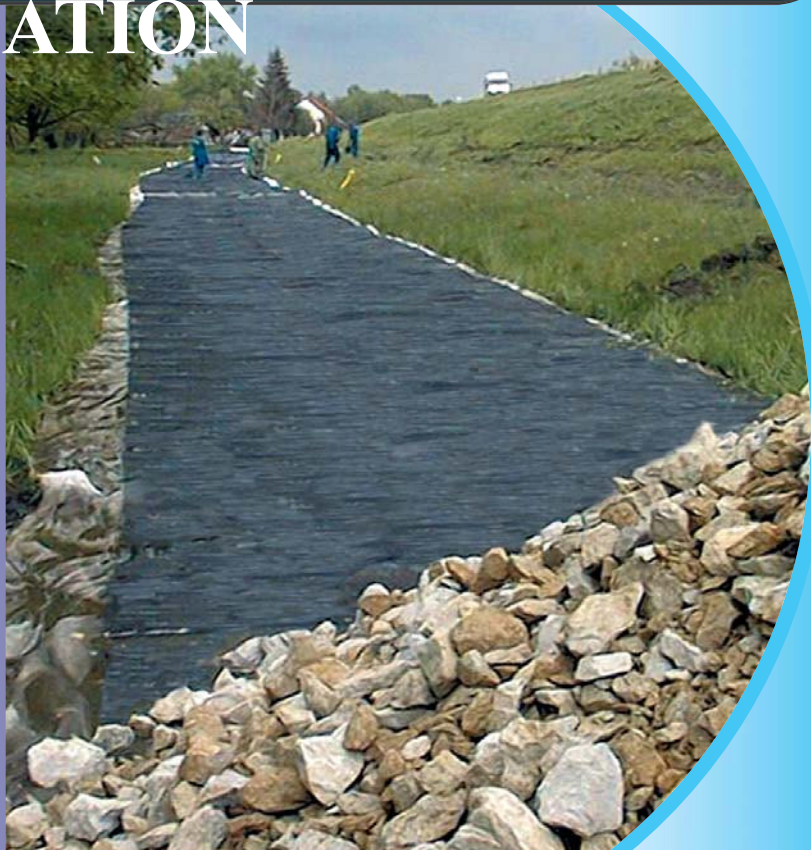


# GROUND STABILISATION

High strength extruded HDPE mesh ideal for ground stabilisation. The mesh should be laid over unstable land and covered with a layer of well-graded, rough stone (Type 1 Road stone - approx. 250mm min.) to form a rigid interlock, restraining lateral movement of the stone and producing a stable surface.

Helps prevent impassable deep mudded areas made by vehicles on soil/grass tracks and farm gateways. It can be used in the construction of small roads to prevent surface deformation caused by penetration of the granular sub-base into the soft sub-grade.

- Road embankments & slopes
- Farm gateways
- Grass & soil tracks
- Grassed/soil areas being used by heavy farm machinery

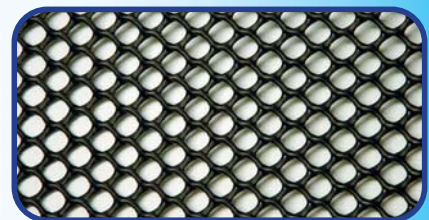


## SPECIFICATIO

SIZE	COLOUR	MESH APERTURE	WEIGHT	PART
NUMBER 2m x 30m	Black	27mm x 27mm	660g/m <sup>2</sup>	



## Mesh Structures



## U-

Steel U-pins to secure meshes to the ground.



## SPECIFICATIO

PRODUCT	MATERIAL	SIZE	OUTER	PART
NUMBER U-Pin	Steel	150mm x 8mm	50	in bag

M32B-01-06